



CLAY BRICKS



Solid Bricks



Perforated Bricks



Hollow Bricks

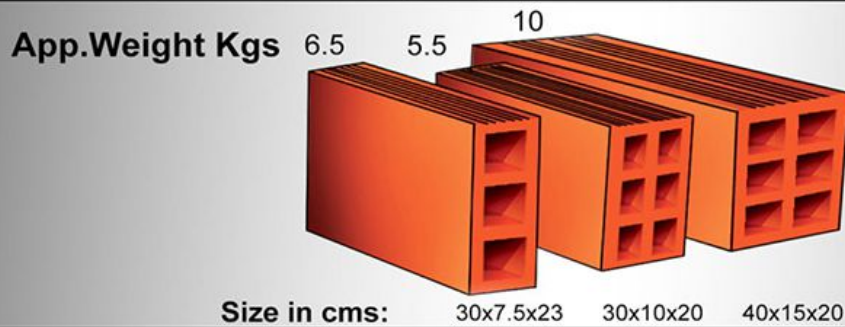
Eco friendly building solutions

The Baliapatam Tile Works Ltd.

www.btwbricks.com

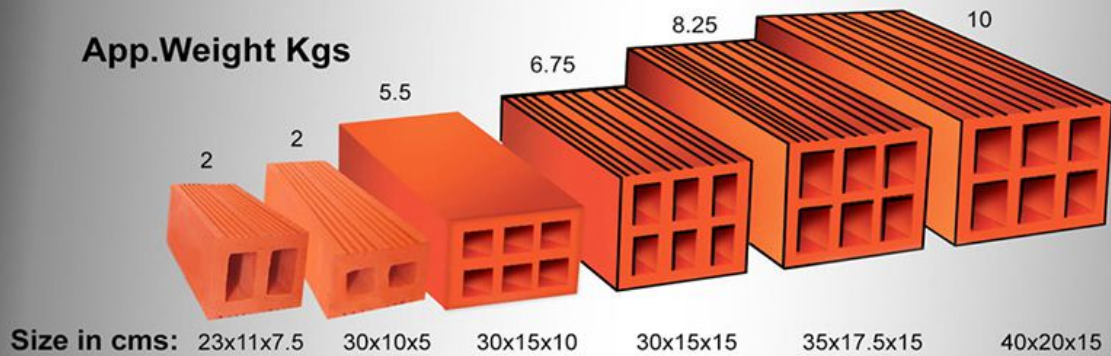
HOLLOW PARTITION BRICKS

(For partitioning wall)



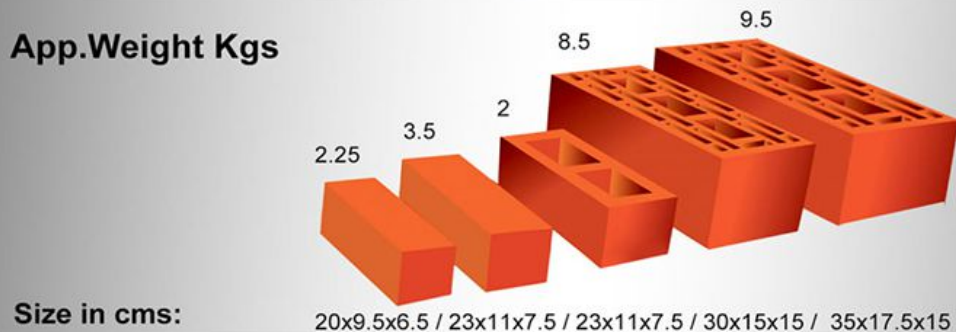
HOLLOW BRICKS

(For single storied constructions)



SOLID & PERFORATED BRICKS

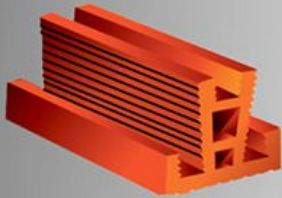
(For load bearing constructions)



HOLLOW ROOFING BRICKS

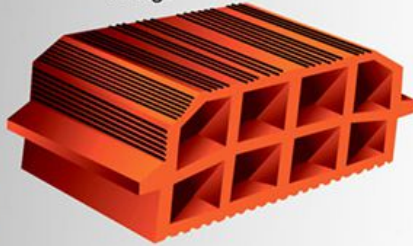
Clay Channel

2.5 Kgs



Size: 25 x 15 x 10 cms

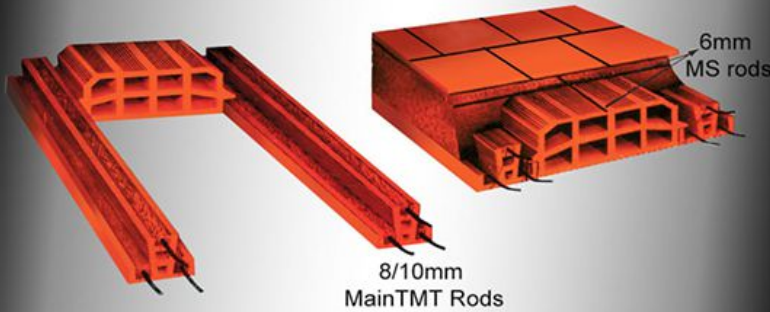
10 Kgs



36 x 25 x 15 & 36 x 25 x 10 cms

This Hollow Roofing System is used for Floor & Roof constructions. Only under the Supervision of a Competent Civil Engineer the construction should be done. The Clay Channels are to be well soaked in water before casting the beam with MS Rod of 8 /10mm and 1:2 Cement motar to requirement. After the curing period the Joist are then lifted to Walltop and placed with a spacing of 50cm c/c. Each Joists are then supported by Props to min distance of every 2 mts. The Roofing Bricks are Laid in between the Joist, and the Temperature Reinforcement is provided over the Roofing Brick. Negative Reinforcement should be correctly placed in between each Joist before Rich Concreting is done to a minimum 6 cms over the R Brick, and should be well Cured Roofing Tiles / Sheets should be provided 2 protect the Slab from the weather etc.

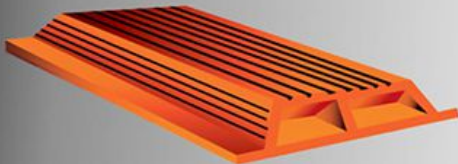
METHOD OF LAYING



HOLLOW ROOFING BRICKS

Low Cost Hollow Roofing System

4.5 Kgs



Size: 35 x 25 x 6.5 cms

8 / 10mm main TMT Bar



LOWCOST ROOFING SYSTEM: Is found to be better as they are lighter, cost effective and also provide good thermal insulation. However they are recommended for Single Floor upto 3 mt span. The MS Reinforcement, Assembly, Concreting should be done only under the Supervision of a experienced civil Engineer. Clay Roofing Tiles / Sheets should be provided to protect the Slab from the weather etc

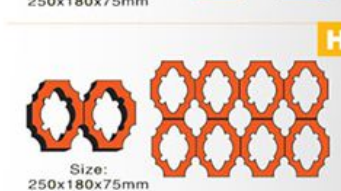
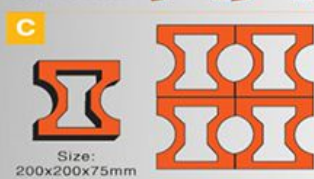
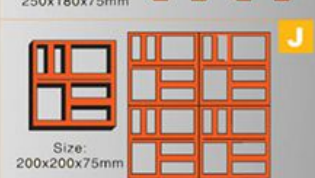
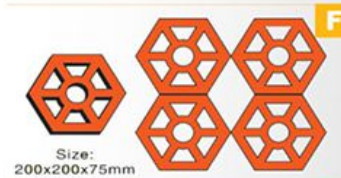
PAVING BRICKS

Size: 20x15x7.5 cms
20x15x5 cms



For Paving walkways

VENTILATOR BRICKS



Please note that the Sizes & Designs of all Products are liable to be changed without NOTICE

The Baliapatam Tile Works Ltd.

P.O. Pappinisseri- 670561, Kannur Dist, Kerala State.

Phone: Off: 0497- 2787332, 2787336. Fax: - 0497- 2787336

E.Mail: cnn_btwtiles@sancharnet.in www.btwbricks.com